

# Technical Specifications

---

*Solardge*

## SPECIFICATIONS

Builder/Year: .....	Lürssen - 2013/2014
Designer exterior: .....	Espen Oeino Design
Designer interior: .....	Rodriguez Interiors
Interior Architect: .....	Dölker + Voges
Length: .....	85,10 m / 279'2"
Length in waterline: .....	73,50 m / 242'1"
Beam: .....	13,80 m / 45'3"
Draught (loaded):.....	3,90 m / 12'3"
Construction material: .....	Steel hull / Aluminium superstructure
Displacement: .....	2,899 Gross Tons
Cruising Speed: .....	15 Knots
Maximum Speed: .....	17.5 Knots
Range at 12 knots: .....	6.000 NM
Engines: .....	2 Main x CAT 3516 @ 2.000 KW
Generators: .....	3 x CAT C18 DITA - 1 x 570 Kva at 1500 rpm - 2 x 455 Kva at 1500 rpm
Emergency Genset: .....	1 x MAN 240 Kva
Gearbox: .....	2 x Reintjes WAF 863L
Propellers: .....	2 x Piening propellers, 5 blade high skew FPP
Bow thruster: .....	Brunvoll, 240 KW
Water jet propulsion unit: .....	Schottel, 240 KW
Fuel capacity: .....	222,000 Litres
Fresh water capacity: .....	50,000 Litres per day
Fresh water makers: .....	2 x HEM Duplex-2 freshwater makers (50,000 Litres making capacity)
Sewage system: .....	DVZ JZR-100 "Biomaster"
Stabilizers: .....	Quantum QC 2400 XT Fins, Stabilisation at Anchor
Air conditioning: .....	Heinen + Hopmann VAV System
Class: .....	LRS. 100A1, SSC Yacht (P) MONO LMC, vG6 UMS
Berths: .....	1 x Master, 1 x VIP (can convert to x2) 6 x Guest Cabins and 15 Crew Cabins

## ACCOMMODATION

Cabins: .....	7 x Double Cabins, 1 x Twin Cabin
Guests: .....	12
Crew: .....	29
Crew Berths: .....	15x Crew Cabins

## TENDERS AND WATER-SPORTS EQUIPMENT

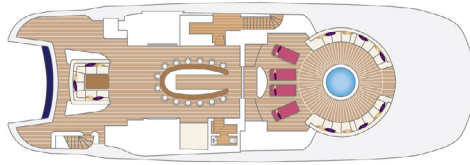
1 x 11 m/ 36'1" Fjord, 2 x Diesel 300hp  
1 x 10 m/ 32'9" Naiad, 2 x Diesel 300hp  
1 x 7.43 m/ 24'4" Centurion Wake Boat, 1 x Diesel 300hp  
1 x 6.25 m/ 20'6" Fassmer Rescue Boat, 212hp (Solas approved)  
3 x Yamaha WaveRunner VXR VX1800AM  
1 x Stand Up Jetski, Yamaha Super Jet SJ700BM  
1 x 280 cm/ 9'2" Narwhal Jet Boat 0100580 Sea Jet, Yamaha 110hp  
3 x Seabob, F5  
Brownie's Explorer (F285X Third Lung Hookah System 4 Cycle OHV gasoline engine)  
Resort certified scuba diving facility  
1 x RDT Unit, Advanced medical equipment (Remote diagnostic telemedicine)

## ENTERTAINMENT

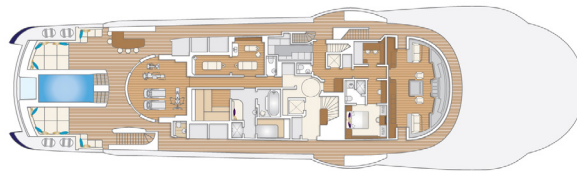
Gaming Console in cinema and main salon  
Studio Evolution Karaoke system on top deck forward and main deck salon

# DECK PLANS

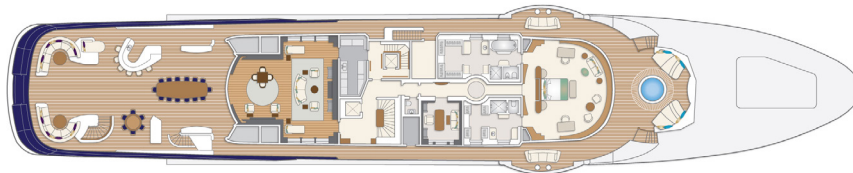
## TOP DECK



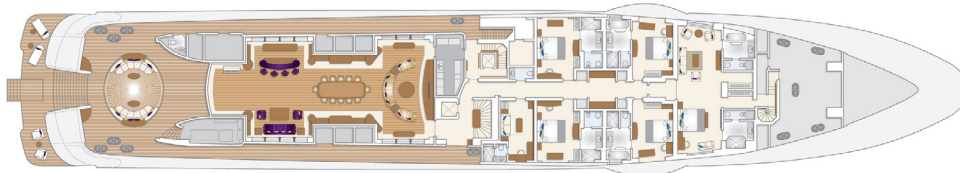
## BRIDGE DECK



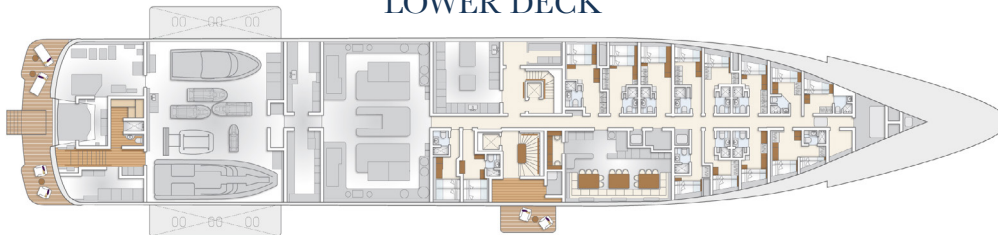
## OWNER'S DECK



## MAIN DECK



## LOWER DECK



## TANK DECK



To learn more about Solandge  
or to request specifications,  
please contact your preferred  
charter broker.

---

Tel: +33 (0)4 89 89 16 05  
Email: [enquiries@solandge.info](mailto:enquiries@solandge.info)  
[www.solandge.info](http://www.solandge.info)

*Solandge*